



Combo Scanner I

Quick Installation Guide

I. Unpack the Combo Scanner



Combo Scanner



Slide Film Holder



Backlight Holder



Business card Fixture



Negative Film Holder



Photo/Business Card Holder



CD-ROM



USB cable



Clean Brush



User Manual



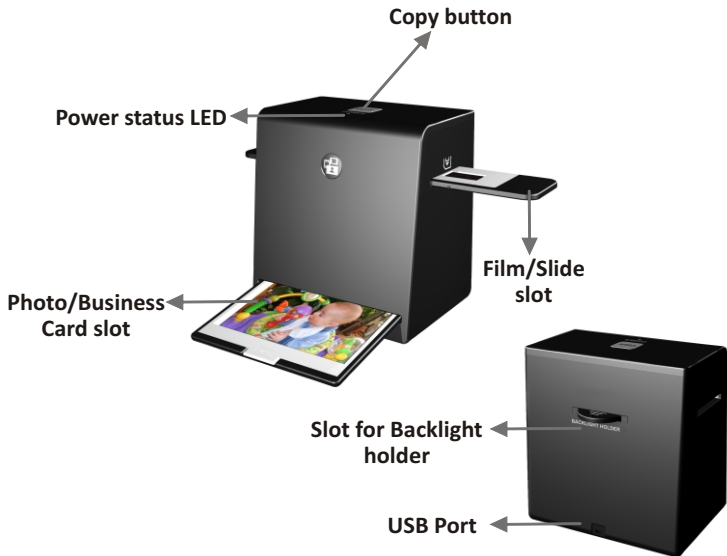
Quick Installation Guide

Note

- ❖ This Combo Scanner supports Windows XP, Vista and Windows7(32/64bits) via USB 2.0 only.
- ❖ We strongly suggest using a clean, dry, non-alcohol cotton swab to clean the glass surface on the back-light holder and the business card fixture periodically to produce a clear image.
- ❖ Make sure all negative films, slide films, cover trays and photos are free of dust and dirt before inserting into the Combo Scanner as this may affect the image quality when scanning.
- ❖ When cleaning films, please use a professionally recommended purger from a photo store to avoid damaging old or precious films.

9. After completing the installation, the film-scanner is ready to start with “ Image scan Tool” under program files. (WindowsXP/Vista/Windows7) It is recommended (but not required) to restart your PC after installation or un-installation.

III. Using the Combo Scanner



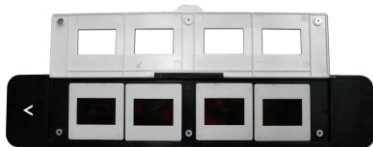
Installing film into the film holder

Install slide Film into the holder entitled "Slides Only"

1. Open the slide holder as illustrated



2. Place slide in recessed slot in holder

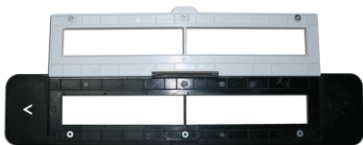


3. Close the film holder



Install Negative Film into the holder entitled “Negative Film Only”:

1. Open the film holder as illustrated



2. Install film into negative film slot



3. Close the film holder



Note

- ❖ To avoid a mirror image, follow the serial numbers (from left to right) on top of film when installing negative film into holder.



Figure 1

- ❖ If the image is upside down [see fig.2], the image can be corrected by "Rotate" function in Image Scan Tool after capture [see fig.3].

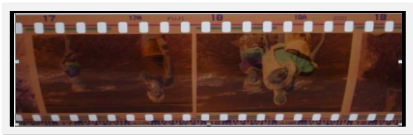


Figure 2

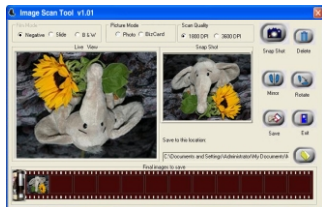


Figure 3

II. Driver Installation



To use the Combo Scanner, please complete the following installation in advance.

1. Turn on the computer
2. Insert the installation CD into the CD-ROM drive and the installation CD menu will appear
3. Click the "Installation" button to begin.
4. After the installation completed, you can browse the video instructions and user manual from the CD.
5. Click "Exit" to quit the driver installation menu.

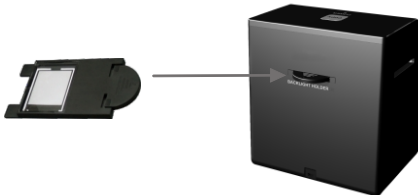
How to use Combo Scanner

Scanning Film/Slide

1. Put Film into film holder



2. Insert the film/slide back-light holder at the rear side of the Combo Scanner unit.



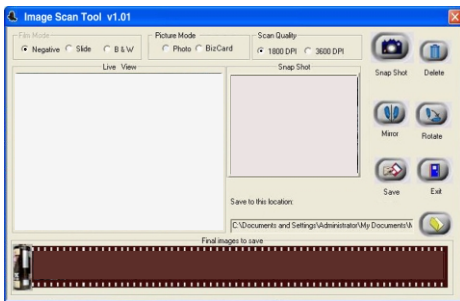
3. Plug in your USB cable to your PC with another side on the Combo Scanner unit.



4. Insert the film holder into the right side of the Combo Scanner unit



5. Click “Image Scan Tool” PC program to enter operation interface as shown below. The PC program will go into Film/Slide Mode automatically.



Scanning Photo

1. Remove the film / slide holder as well as the back-light holder from the Combo Scanner unit if either one is attached.



Remove film /slide holder by sliding the holder to the left hand side.



Remove back-light holder by pressing down the handle and pulling it out.

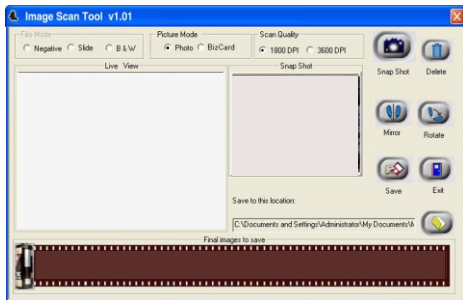
2. Open the photo holder as illustrated, Please place the photo on the base of the photo holder and close the photo holder.



4. Insert the photo holder into the photo slot of the Combo Scanner unit.

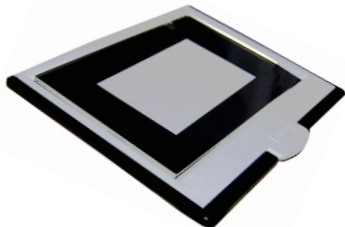


5. Click “Image Scan Tool” PC program to enter operation interface as shown below. The program will go into Picture Mode automatically.

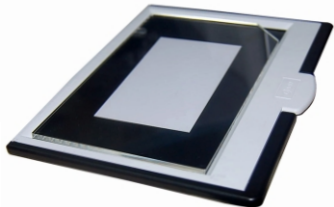


Scanning Business Card

1. Follow Step 1 to remove Film/Slide holder as well as back-light holder in the previous pages.
2. Close the photo holder and Place the business card on the base of the photo holder following the engraved guide line on the holder.



3. Put the Business Card fixture on the top of Photo Holder.



4. Insert the entire photo holder with the business card fixture into the photo slot of the Combo Scanner unit.

5. Press “Copy” button or press “Snap Shot” button in the PC program to capture the image



6. Process necessary modification by using the function buttons on right hand side



7. Save captured images to PC



8. Get final images from PC for further review and edit



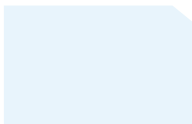
V. Cleaning the Combo Scanner

Cleaning the backlight holder

Detach the backlight holder from the Combo Scanner unit. Using the provided clean brush or a clean, dry, nonalcohol cotton swab to clean the glass surface periodically to produce a clear image during operation.



Cleaning the business card fixture



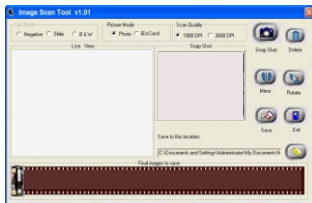
Using the provided clean brush or a clean, dry, non-alcohol cotton swab to clean the surface of the business card holder periodically to produce a clear image during operation.

You can double check the result of cleaning by removing the film holder from the device and insert the cleaned backlight holder back into the unit. When you haven't notice any dust in the live view window that means you can stop cleaning.

Caution

The backlight holder should be handled with extra care to avoid any scratching the glass surface in order to maintain the quality of scanned image.

Note: If there's any abnormal condition cause user special behaviour, Combo Scanner can be reset by pull/insert USB cable again.





Instructions shall caution users that modifications not approved by the party responsible for compliance could void user's authority to operate the equipment.

The following or equivalent as appropriate:

“NOTE: This equipment has been tested and found to comply with the limits for a Class B digital device, pursuant to Part 15 of the FCC Rules. These limits are designed to provide reasonable protection against harmful interference in a residential installation. This equipment generates, uses and can radiate radio frequency energy and, if not installed and used in accordance with the instructions, may cause harmful interference to radio communications. However, there is no guarantee that interference will not occur in a particular installation.

If this equipment does cause harmful interference to radio or television reception, which can be determined by turning the equipment off and on, the user is encouraged to try to correct the interference by one or more of the following measures:

- Reorient or relocate the receiving antenna.
- Increase the separation between the equipment and receiver.
- Connect the equipment into an outlet on a circuit different from that to which the receiver is connected.
- Consult the dealer or an experienced radio/TV technician for help.”

Statement that the product complies with Part 15 (i.e. “This device complies with Part 15 of the FCC Rules. Operation is subject to the following two conditions: (1) This device may not cause harmful interference, and (2) this device must accept any interference received, including interference that may cause undesired operation.”)

CALIFORNIA PROP 65 WARNING

WARNING : This product contains chemicals known to the State of California to cause birth defects or other reproductive harm. For more information on these regulations and a list of chemicals, log on the following website address:
<http://www.oehha.ca.gov/prop65.html>

